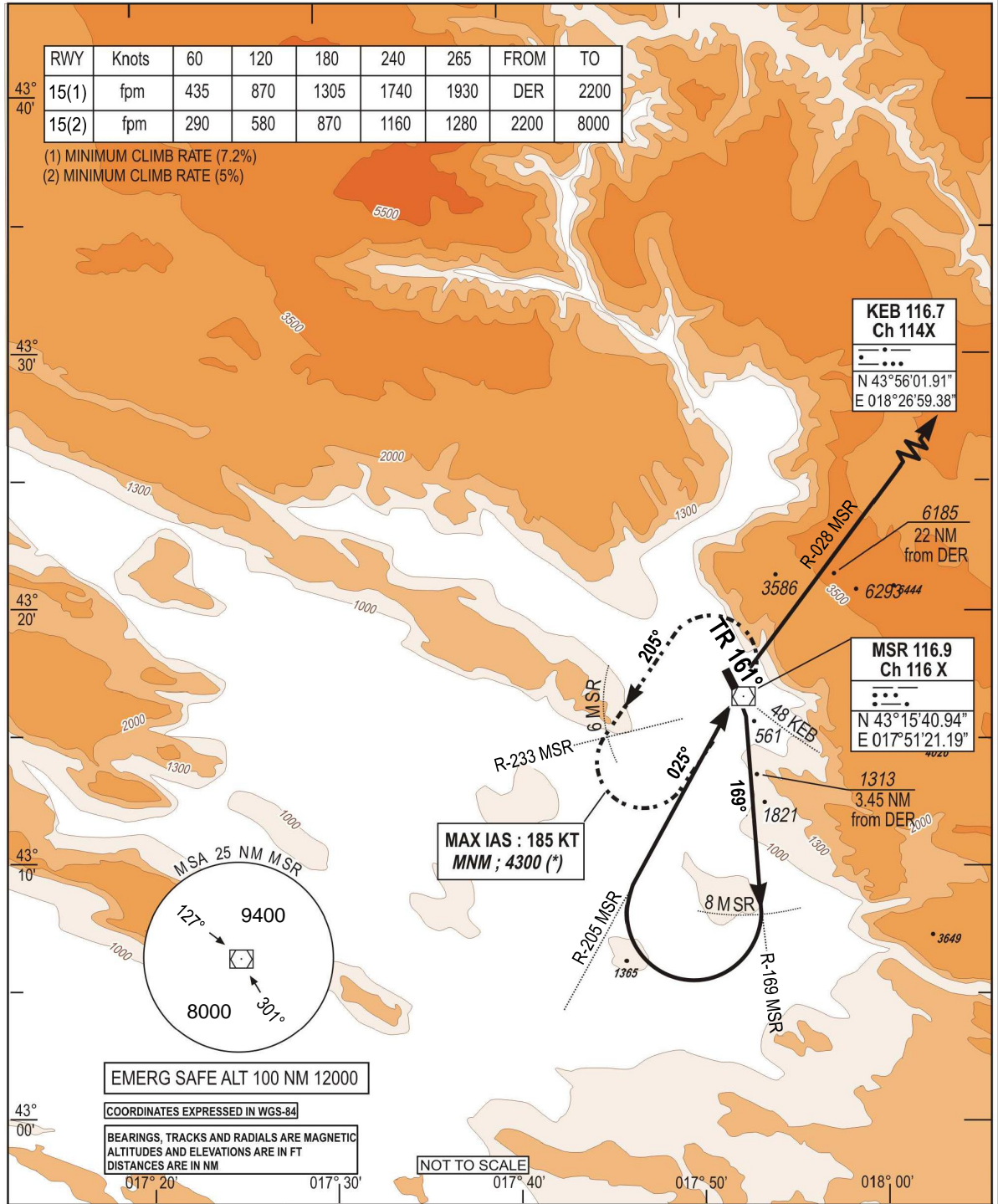


**STANDARD DEPARTURE CHART  
INSTRUMENT (SID) - ICAO**

TRANSITION  
ALTITUDE  
10 000 FT  
VAR 5°E (2020)

APP 120.225  
129.875  
TWR 125.550  
ATIS 126.225

**MOSTAR (LQMO)  
KEB 1B RWY 15**



CHG: MSA UPDATED

SID	DEPARTURE ROUTE DESCRIPTION
<p>KEB 1B (RWY 15)</p>	<p>- After DER. Climb (1) TP 161° then R-169 MSR                      - At 8.0 D MSR, turn right to intercept R-205 MSR inbound direct to MSR.                      - Turn right to intercept R-028 MSR direct to KEB.                      - Then as directed by ATC.</p> <p>(1) Minimum climb rate : 7.2% from DER to 2200 ft then 5.0% until 8000 ft (*)                      (*) Rescue pattern climb : Over 2200 ft, if minimums climb rate not possible above 2200 ft, climb standard rate (3.3%) until MSR, then climb in holding pattern.                      At 8000 ft direct to KEB.</p>

**THIS PAGE INTENTIONALLY LEFT BLANK**